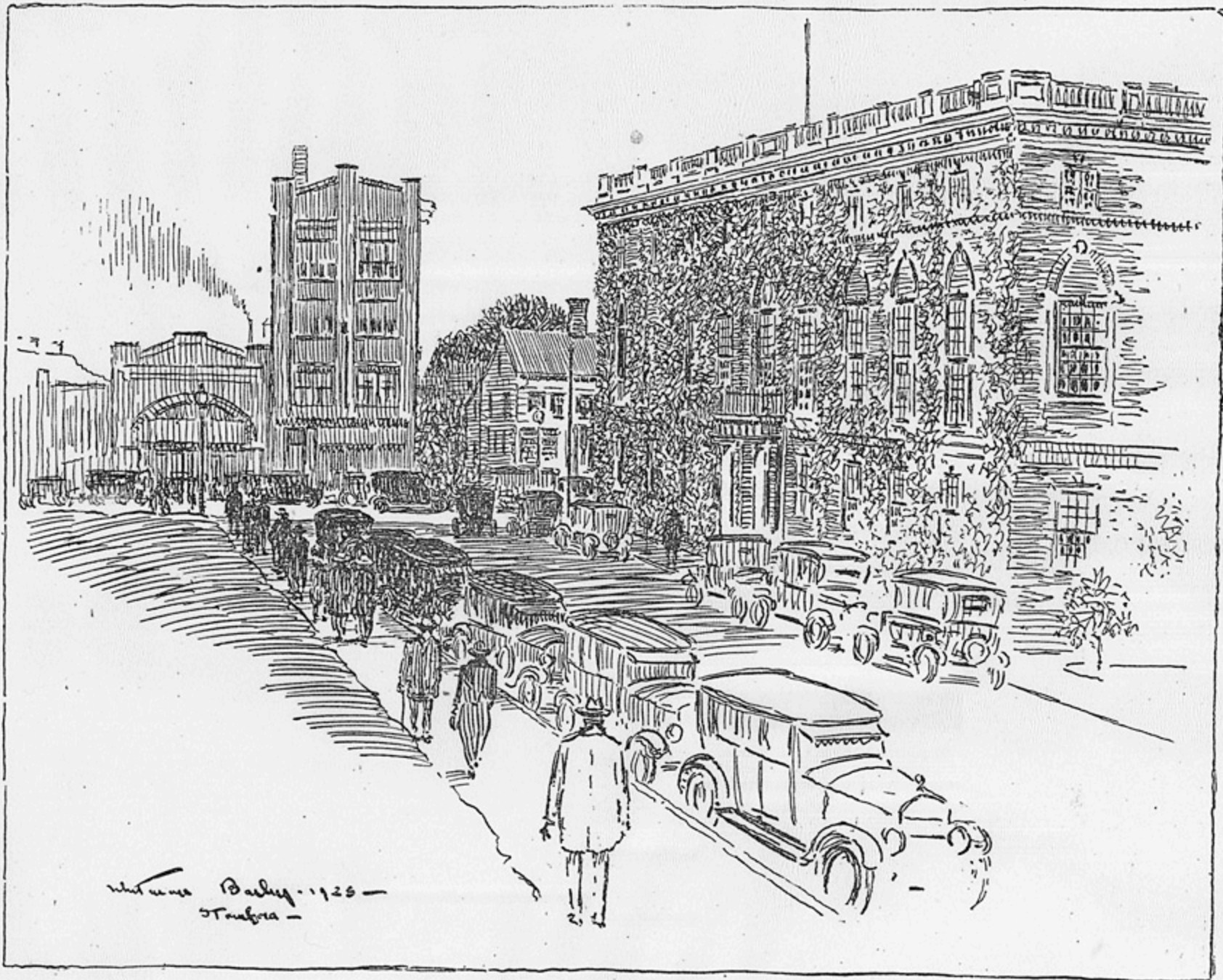


ARTIST'S VIEW OF SUBURBAN AVENUE AND MAIN STREET.



Whitman Bailey - 1925 -
Stamford -

Suburban Avenue and Mair Street is illustrated in the above sketch by Whitman Bailey, with the handsome club house of the Suburban Club the

feature of this district. A glimpse is shown of the old Holly House, the only real old landmark that remains to front on Stamford's business

streets. The Rialto Theatre and the store and apartment building occupied by the H. S. Helander Auto Supply Co., are also indicated.

This picture, drawn from life, gives a suggestion of the traffic congestion, which is daily becoming more serious on all our business thoroughfares.