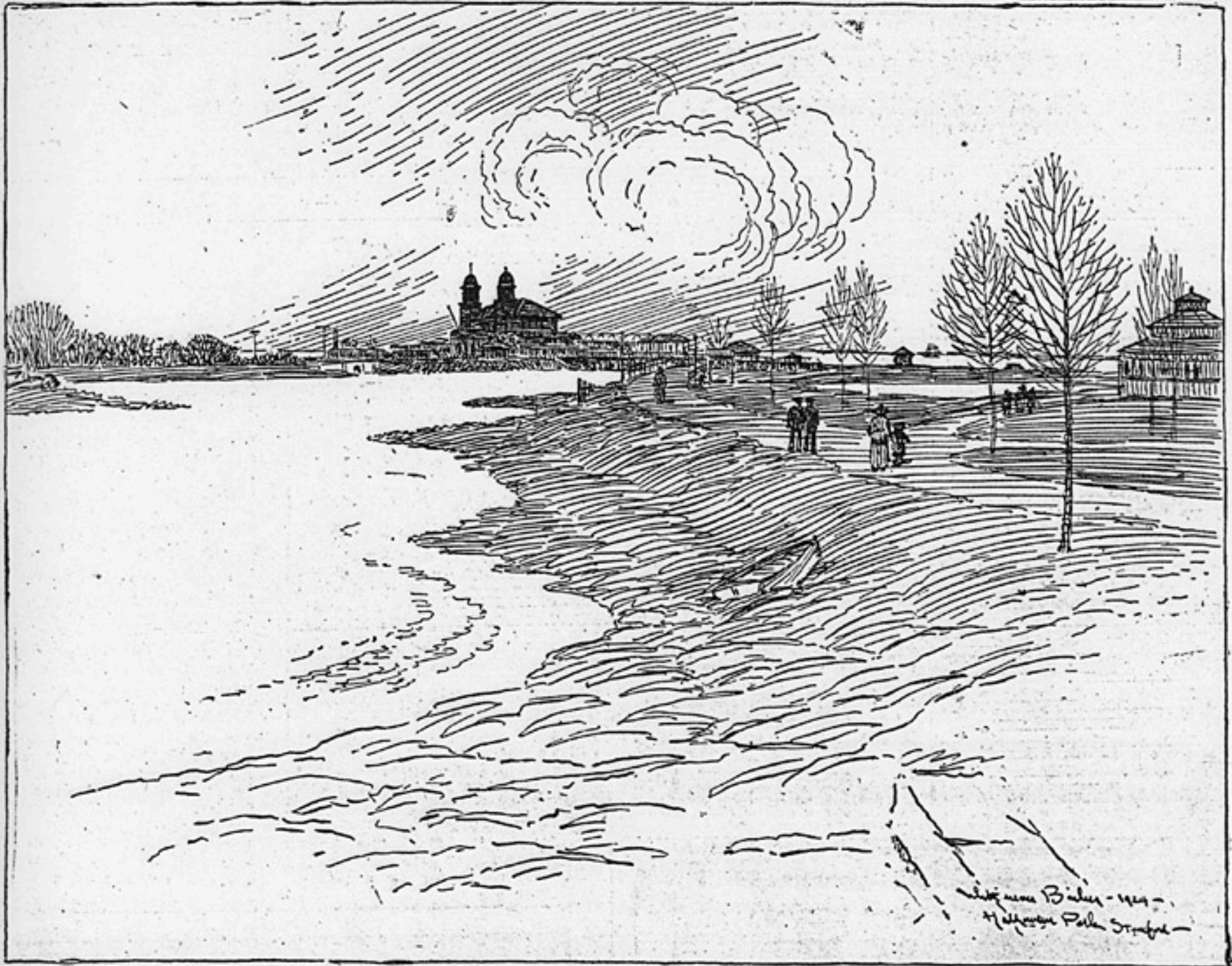


## HALLOWEEN PARK AND BATHING PAVILION.



Spring is here and good old Summer is just around the corner, and Halloween Park, freed from its white mantle, the result of this week's unseasonable snow storm, is putting on its Springtime attractiveness.

Here is a picture of the park—Stamford's big play ground—showing the handsome bathing pavilion in the distance, with a view of the large lagoon in the foreground.

The Winter storms dealt none too kindly with Halloween Park. More

of the shore was eaten away and sand was shifted about a lot by the wild waves. But the superintendent of parks has been busy and, when the bathing season opens, it is quite likely, the city board of finance con-

senting, that the patrons will find improved bathing conditions within and without the pavilion.

Meantime, the baseball field and the golf course are in use and the tennis courts are being made ready,